

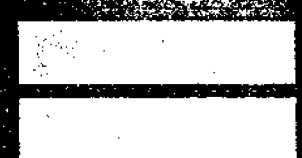
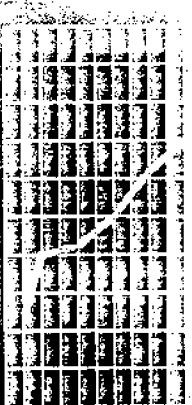


April 1997

EMBARGO: 11:30 AM (CANBERRA TIME) TUES 8 APRIL 1997

Tasmanian Statistical Indicators

Statistics ■



ABS Catalogue No. 1303.6

**TASMANIAN STATISTICAL INDICATORS
APRIL 1997**

**Denis W. Rogers
Regional Director, Tasmania**



CONTENTS

	Page
MAIN FEATURES	v
TABLES	
1 Population	1
2 Births, deaths and marriages registered	1
3 Labour force status	2
4 Labour force status by region, males	3
5 Labour force status by region, females	4
6 Labour force status by region, persons	5
7 Teenage labour market	6
8 All employed persons by occupation	7
9 Employed wage and salary earners, sector and industry	8
10 Average hours worked	8
11 Job vacancies	9
12 Industrial disputes	9
13 Average weekly earnings of employees	10
14 Weekly award rates of pay indexes, full-time adult employees	10
15 Summary of annual movements in wages and prices	11
16 House price index numbers, Hobart	11
17 Consumer price index, Hobart and eight capital cities combined	12
18 Price index of materials used in building other than house building, Hobart	13, 14
19 Production of selected commodities	15
20 Livestock slaughtering: original	16
21 Livestock slaughtering: seasonally adjusted and trend	16
22 Meat production	17
23 Principal mineral concentrates produced	17
24 Sawmills and plywood mills, logs delivered and timber produced	18
25 Chipping and grinding of wood	18
26 Logs delivered for milling or chipping	19
27 Building approvals	20

INQUIRIES

- *for further information about statistics in this publication and the availability of related unpublished statistics, contact the Hobart office of the ABS on (03) 6222 5800.*
 - *for information about other ABS statistics and services, please refer to the back cover of this publication.*
-

	Page
28 Secured housing commitments	20
29 Banking statistics	21
30 Private new capital expenditure by type of asset	21
31 Passenger arrivals and departures, Tasmania	22
32 Total passenger arrivals by air and sea, Tasmania	22
33 Accommodation statistics	23
34 Registrations of new motor vehicles	24
35 Turnover of retail establishments at current prices	24
36 Major Statistical Indicators—Australia and State comparisons	25
 EXPLANATORY NOTES	 26

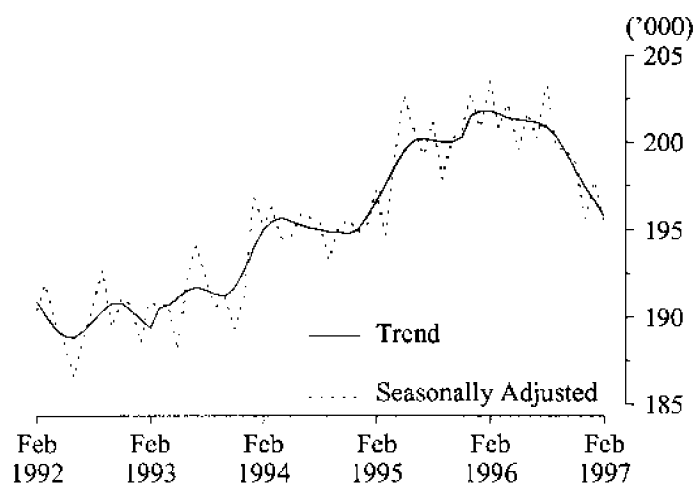
MAIN FEATURES

EMPLOYMENT

State comparisons
trend estimates

The Australian and State *trend* series comparisons are given on page 25. There was a decrease of 3.0% in Tasmania's employment over the year to February 1997. The largest percentage increase in employment was in Western Australia (3.2%). Next followed Queensland (1.7%), Victoria (1.5%), New South Wales (1.0%), and South Australia (0.5%).

EMPLOYMENT, TASMANIA



Regional comparisons
original terms

In the Hobart and Southern Statistical Divisions the estimate of employment in *original terms* in December 1996 was 103,100 and compares with 102,300 in December 1995. The estimate of employment in the Northern Statistical Division in December 1996 was 55,500 and compares with 59,300 in December 1995. The estimate of employment in the Mersey-Lyell Statistical Division was 40,000 in December 1996, and compares with 44,300 for December 1995.
(See tables 3-8, pages 2-7.)

THE LABOUR FORCE

Trend estimates

There were an estimated 219,300 persons (based on *trend* estimates) in the labour force in February 1997, and an estimated 369,400 civilian Tasmanians aged 15 years or more yielding a labour force participation rate was 59.4%, compared with 61.0% in February 1996.

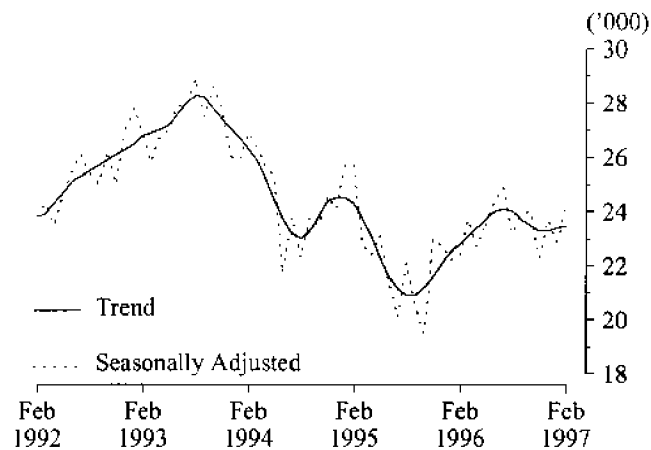
For males, the *trend* estimate of the participation rate was 69.7%, compared with 71.7% for February 1996. For females, the *trend* estimate of the participation rate was 49.4%, compared with 50.7% in February 1996.

(See table 3, page 2.)

UNEMPLOYMENT

Trend estimates The Tasmanian trend estimate of the number of unemployed persons in February 1997 was 23,500. This compares with 22,800 for February 1996. The *trend* estimate of the unemployment rate of 10.7% in February 1997 compared with 10.1% in February 1996. (See tables 3-8, pages 2-7.)

UNEMPLOYMENT, TASMANIA



AWARD RATES OF PAY INDEXES

Original terms The movement, from January 1996 to January 1997, of weekly award rates of pay indexes for Tasmania was 0.8% for full-time adult females and 0.7% for full-time adult males, for a combined annual increase of 0.8%. For Australia, the figures were 1.5% for females and 1.2% for males, for a combined annual increase of 1.3%.

For full-time adult female employees in Tasmania, the largest industry increases over this 12 month period occurred in the Transport and storage industry (7.0%); and the Public administration and defence industry (2.1%).

For the same period for full-time adult male employees in Tasmania, the largest industry increases occurred in the Transport and storage industry (1.8%); and the Manufacturing industry (1.7%).

The largest occupation increases over the same period for full-time adult female employees occurred in Plant and machine operators, and drivers (2.0%); and Tradespersons (1.5%).

For full-time adult male employees the largest occupation increases over the period occurred in Clerks (1.2%); and Plant and machine operators, and drivers (1.2%).

Source: *Award Rates of Pay Indexes, Australia*, ABS catalogue no. 6312.0.

BUILDING MATERIALS
PRICE INDEXES

Original terms The price index of materials used in house building in Hobart decreased by 0.7% over the twelve months ending January 1997. Over the same period the national average increased by 0.2%. Sydney, Adelaide, Brisbane and Perth all recorded increases over the period with Adelaide being the highest, at 2.1%.

For materials used in building other than house building, the Hobart price index increased by 0.9% over the twelve months ending January 1997. Other capital cities that recorded increases in the index were Sydney, Brisbane, Adelaide and Perth with Adelaide again being the highest at 1.7%. The index for the weighted average of the eight capital cities increased by 0.3% over the period.

Components which contributed most to the change in Hobart's materials other than house building index over the year ending January 1997 were paint and other coatings (up 5.2%), fabricated steel products (up 4.7%), and structural steel (up 3.9%). These rises were partly offset by falls in the prices of structural timber (down 9.3%) and non-ferrous pipes and fittings (down 4.0%).
(See tables 15 and 18, pages 11 and 13.)

LIVESTOCK SLAUGHTERING

Trend estimates The January 1997 Tasmanian *trend* estimate for the slaughtering of cattle and calves was 1.6% higher than that recorded in the previous month. The number of sheep and lambs slaughtered increased by 7.2%, and the number of pigs slaughtered increased by 3.3% over the same period.

The *trend* estimate of the number of cattle and calves slaughtered in January 1997 was 22,200, which was 15.0% above the number slaughtered in January 1996.

The *trend* estimate for the slaughtering of sheep and lambs was 74,700 in January 1997, which was 7.8% above the number slaughtered in January 1996. This was the fourth successive monthly increase in the number of sheep and lambs slaughtered in Tasmania, but well below the trend estimate of 85,400 slaughtered in January 1995.

The *trend* estimate of 6,200 pigs slaughtered in January 1997 was 10.2% below the number slaughtered in January 1996, and 19.6% below the number slaughtered in January 1995.
(See table 21, page 16.)

TOURIST ACCOMMODATION

Original terms The room occupancy rate for hotels, motels and guest houses in Tasmania for December quarter 1996 was 54.8% compared with the 57.0% recorded in December quarter 1995.

The unit occupancy rate for holiday flats, units and houses for December quarter 1996 was 52.9%, almost unchanged from the 52.8% recorded in December quarter 1995.

The site occupancy rate for caravan parks for the December quarter 1996 was 33.1%, slightly down on the 33.2% recorded in December quarter 1995.

Passenger arrivals into Tasmania, comprising visitors and residents returning to the State, totalled 251,190 for December quarter 1996, compared with 252,376 recorded in December quarter 1995.
(See tables 31-33, pages 22 and 23.)

BUILDING APPROVALS

Original terms There were 153 dwelling units approved during January 1997 in Tasmania. This was the same number as recorded for December 1996 but a 32.9% decrease on the number recorded for January 1996 (228).

For the twelve months ended January 1997 there were 2,084 new dwelling units approved, 24.7% below the 2,766 units recorded for the twelve months ended January 1996.

The value of new residential building approved, at current prices, in January 1997 was \$12.2 million, 5.4% below the December 1996 figure of \$12.9 million, and 48.5% below the January 1996 figure of \$23.7 million.

The value of non-residential building approved, at current prices, in January 1997 was \$10.9 million, 147.7% above the December 1996 figure of \$4.4 million and 74.2% below the January 1996 figure of \$42.3 million.
(See table 27, page 20.)

HOUSING FINANCE

Trend estimates The *trend* estimate for the number of new secured housing finance commitments entered into in Tasmania in January 1997 was 855 dwellings, a decrease of 6.8% on the previous month's figure of 917. The value of these new commitments was \$57.0 million, down 7.5% on the December 1996 value of \$61.6 million.

During the twelve months ended January 1997 the *trend* estimate for the number of Tasmanian secured housing commitments fell 8.4% from 933 to 855. The value of these commitments fell 10.7% from \$63.8 million to \$57.0 million. Nationally the total number of Australian dwelling commitments increased 5.4% from 38,656 to 40,748 dwellings, and the value increased 15.1% from \$3,742.2 million to \$4,306.2 million.

Source: *Housing Finance for Owner Occupation*, ABS catalogue no. 5609.0.

NEW MOTOR VEHICLE REGISTRATIONS

Original terms There were 935 new motor vehicles (excluding motorcycles) registered in Tasmania during January 1997. This was 46.2% below the 1,737 registered in December 1996 but, 7.1% above the figure for January 1996 (873).

Of the new motor vehicles (excluding motorcycles) registered in January 1997 in Tasmania, 4 were vehicles registered by vehicle rental businesses compared with 823 registered by vehicle rental businesses in December 1996 and 5 in January 1996.
(See table 34, page 24.)

RETAIL

Original terms In *original* terms, the estimate of retail turnover in Australia during January 1997 was \$10,255.3 million, 3.7% above the \$9,886.8 million recorded in January 1996.

In *original* terms, the estimate of retail turnover in January 1997, for Tasmania, was \$247.4 million, 2.9% above the figure recorded for January 1996 (\$240.5 million).

Trend estimates The *trend* estimate of retail turnover in Australia during January 1997, was \$10,237.8 million, 1.4% higher than for January 1996 (\$10,101.1 million).

The *trend* estimate of retail turnover in Tasmania recorded for January 1997, was \$249.0 million, an increase of 1.8% on the January 1996 figure of \$244.6 million.

The monthly *trend* estimate for turnover of retail and selected service establishments for Tasmania has shown an increase for the last five months.

(See table 35, page 24.)



1

POPULATION: Original

Year or quarter	Estimated resident population at end of period	Natural increase ¹	Net estimated migration gain	Total population growth	Annual growth rate ²
	'000	'000	'000	'000	%
Year ended 30 June					
1992	469.7	3.2	- 0.3	2.9	0.62
1993	471.4	3.1	- 1.5	1.7	0.35
1994	472.5	3.1	- 2.0	1.1	0.24
1995	473.0	2.9	- 2.4	0.5	0.11
1996	473.4	2.6	- 2.2	0.4	0.08
Quarter					
1995					
June	473.0	0.7	- 0.7	0.0	0.11
September p	473.2	0.7	- 0.5	0.2	0.09
December p	473.2	0.5	- 0.6	- 0.1	0.07
1996					
March p	473.2	0.8	- 0.7	0.1	0.04
June p	473.4	0.6	- 0.4	0.1	0.08
September p	473.4	0.6	- 0.5	0.1	0.04

¹ Excess of live births registered over deaths registered (based on usual State of residence).

² Percentage growth from same quarter in previous year.

(Source: Australian Demographic Statistics, ABS catalogue number 3101.0)

2

BIRTHS, DEATHS AND MARRIAGES REGISTERED: Original

Year or quarter	Births		Deaths		Infant mortality ¹		Marriages	
	No.	Rate ²	No.	Rate ²	Deaths	Rate ³	No.	Rate ²
Year ended 31 December								
1991	6 857	14.7	3 664	7.9	61	8.9	3 069	6.6
1992	6 956	14.8	3 722	7.9	43	6.2	3 081	6.6
1993	6 804	14.4	3 618	7.7	37	5.4	3 055	6.5
1994	6 836	14.5	3 909	8.3	46	6.7	2 887	6.1
1995	6 558	13.9	3 739	7.9	36	5.5	2 840	6.0
Quarter								
1995								
June	1 611	..	954	..	10	6.2	667	..
September	1 697	..	982	..	9	5.3	307	..
December	1 446	..	906	..	9	6.2	799	..
1996								
March p	1 748	..	979	..	10	5.7	857	..
June p	1 524	..	969	..	6	3.9	789	..
September p	1 603	..	1 034	..	8	5.0	349	..

¹ Registered deaths of children under one year of age.

² Rate per 1,000 of estimated mean population.

³ Rate per 1,000 live births.

(Source: Australian Demographic Statistics, ABS catalogue number 3101.0)

3

LABOUR FORCE STATUS¹: **Seasonally adjusted and trend**

Month	Seasonally adjusted series				Trend Series			
	Employed	Unemployed	Unemployment rate	Participation rate	Employed	Unemployed	Unemployment rate	Participation rate
	'000	'000	%	%	'000	'000	%	%
MALES								
1996								
February	116.6	14.1	10.8	72.4	115.3	14.4	11.1	71.7
March	115.2	14.8	11.4	71.8	115.5	14.7	11.3	71.9
April	115.7	15.0	11.5	72.2	115.6	14.9	11.4	72.1
May	114.6	14.8	11.4	71.5	115.7	15.0	11.5	72.1
June	116.0	15.1	11.5	72.4	115.8	15.0	11.5	72.2
July	115.1	15.3	11.8	72.0	115.9	14.8	11.3	72.1
August	117.7	14.1	10.7	72.7	115.9	14.6	11.2	71.9
September	115.6	14.4	11.1	71.7	115.4	14.3	11.0	71.6
October	114.4	14.2	11.1	70.9	115.0	14.0	10.9	71.1
November	114.8	12.8	10.1	70.3	114.3	13.9	10.9	70.7
December	113.0	14.7	11.5	70.3	113.6	13.9	10.9	70.3
1997								
January	113.4	13.6	10.7	69.9	113.0	14.0	11.0	69.9
February	112.1	14.7	11.6	69.8	112.4	14.1	11.2	69.7
FEMALES								
1996								
February	86.8	8.3	8.8	50.8	86.5	8.3	8.8	50.7
March	85.6	8.9	9.4	50.5	86.1	8.4	8.9	50.5
April	86.5	7.7	8.2	50.3	85.8	8.5	9.0	50.4
May	84.9	8.7	9.3	50.0	85.6	8.7	9.2	50.3
June	85.7	9.3	9.7	50.7	85.4	9.0	9.5	50.4
July	85.1	9.6	10.1	50.5	85.2	9.2	9.8	50.4
August	85.6	9.1	9.6	50.5	85.0	9.4	10.0	50.4
September	84.0	9.5	10.1	49.8	84.7	9.5	10.1	50.2
October	85.3	9.8	10.3	50.6	84.4	9.4	10.1	50.0
November	84.0	9.4	10.1	49.8	84.1	9.4	10.1	49.8
December	82.6	9.0	9.8	48.8	83.8	9.4	10.1	49.6
1997								
January	84.5	9.3	9.9	49.9	83.6	9.3	10.1	49.5
February	83.3	9.5	10.3	49.4	83.4	9.4	10.1	49.4
TOTAL								
1996								
February	203.5	22.4	9.9	61.4	201.8	22.8	10.1	61.0
March	200.8	23.7	10.6	60.9	201.6	23.1	10.3	61.0
April	202.2	22.7	10.1	61.0	201.4	23.4	10.4	61.0
May	199.5	23.5	10.5	60.5	201.3	23.7	10.5	61.1
June	201.7	24.4	10.8	61.4	201.2	24.0	10.6	61.1
July	200.2	24.9	11.1	61.1	201.1	24.1	10.7	61.1
August	203.3	23.2	10.2	61.4	200.9	24.0	10.7	61.0
September	199.6	23.9	10.7	60.6	200.3	23.7	10.6	60.7
October	199.6	24.0	10.7	60.6	199.4	23.5	10.5	60.4
November	198.8	22.3	10.1	59.9	198.4	23.3	10.5	60.1
December	195.6	23.7	10.8	59.4	197.4	23.3	10.6	59.8
1997								
January	197.8	22.9	10.4	59.8	196.6	23.4	10.6	59.5
February	195.4	24.2	11.0	59.5	195.8	23.5	10.7	59.4

¹ For explanation of terms and concepts, refer to *Labour Force, Australia*, ABS catalogue number 6203.0. (Source: *Labour Force Australia*, ABS catalogue number 6203.0)

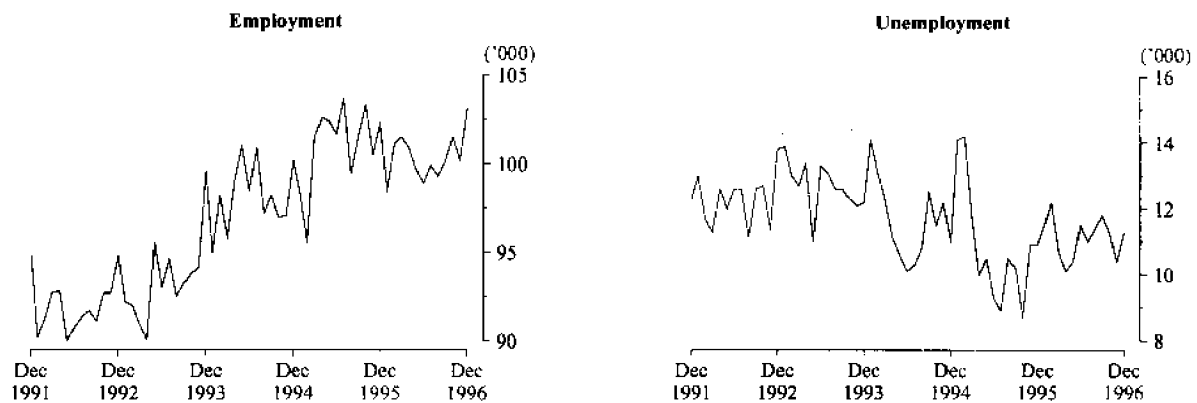
4

LABOUR FORCE STATUS BY REGION, MALES^{1, 2}: **Original**

Month		Total employed	Total unemployed	Unemployment rate	Participation rate
		'000	'000	%	%
HOBART AND SOUTHERN STATISTICAL DIVISIONS					
1993	December	54.9	7.9	12.6	71.7
1995	December	56.3	7.1	11.2	71.3
1996	October	56.5	5.9	9.5	70.2
	November	55.6	6.3	10.2	69.6
	December	57.0	7.0	10.9	71.3
NORTHERN STATISTICAL DIVISION					
1993	December	34.5	5.1	12.8	77.5
1995	December	33.5	4.6	12.0	74.7
1996	October	32.4	4.6	12.4	71.6
	November	33.3	3.5	9.4	71.9
	December	32.6	4.7	12.6	73.3
MERSEY-LYELL STATISTICAL DIVISION					
1993	December	25.2	4.3	14.6	72.1
1995	December	26.0	3.5	11.9	72.2
1996	October	24.8	3.1	11.2	68.2
	November	24.8	3.3	11.8	67.9
	December	25.0	3.9	13.6	70.6
TASMANIA					
1993	December	114.6	17.3	13.1	73.4
1995	December	115.8	15.2	11.6	72.4
1996	October	113.7	13.7	10.7	70.2
	November	113.7	13.1	10.3	69.9
	December	114.6	15.6	12.0	71.7

¹ For explanation of terms and concepts, refer to *Labour Force, Australia*, ABS catalogue number 6203.0.

² Data in this table are original series, i.e. they are not part of a seasonally adjusted or a trend series. Accordingly, care should be exercised when using these data. New monthly data from each quarter (March, June, September and December) are published two months after the quarter. (Source: Labour Force Estimates—microfiche tables.)

Hobart and Southern Statistical Divisions—Persons: **Original**

5

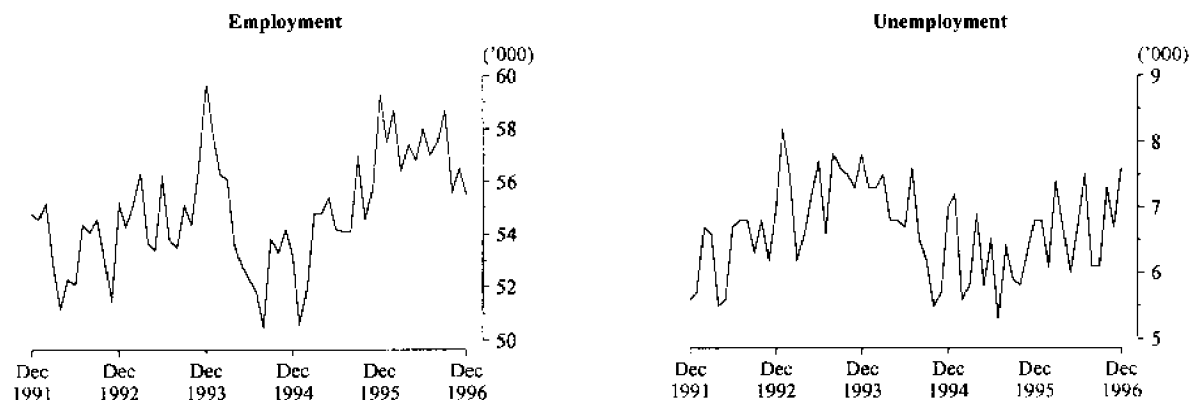
LABOUR FORCE STATUS BY REGION, FEMALES^{1, 2}: Original

Month		Total employed '000	Total unemployed '000	Unemployment rate %	Participation rate %
HOBART AND SOUTHERN STATISTICAL DIVISIONS					
1993	December	44.8	4.2	8.6	52.9
1995	December	46.1	3.8	7.7	53.4
1996	October	45.0	5.4	10.7	53.6
	November	44.6	4.1	8.5	52.0
	December	46.1	4.4	8.7	53.6
NORTHERN STATISTICAL DIVISION					
1993	December	25.2	2.7	9.7	52.2
1995	December	25.7	2.2	7.9	53.6
1996	October	23.2	2.7	10.4	49.4
	November	23.2	3.2	12.1	49.7
	December	22.8	2.9	11.2	48.1
MERSEY-LYELL STATISTICAL DIVISION					
1993	December	15.5	3.2	17.0	46.7
1995	December	18.4	2.8	13.2	51.0
1996	October	17.0	1.8	9.5	45.4
	November	16.7	1.7	9.4	45.4
	December	15.1	2.3	13.1	43.2
TASMANIA					
1993	December	85.4	10.1	10.6	51.4
1995	December	90.2	8.8	8.9	52.9
1996	October	85.2	9.8	10.4	50.6
	November	84.5	9.1	9.7	49.9
	December	84.0	9.5	10.2	49.8

¹ For explanation of terms and concepts, refer to *Labour Force, Australia*, ABS catalogue number 6203.0.

² Data in this table are original series, i.e. they are not part of a seasonally adjusted or a trend series. Accordingly, care should be exercised when using these data. New monthly data from each quarter (March, June, September and December) are published two months after the quarter. (Source: Labour Force Estimates—microfiche tables.)

Northern Statistical Division—Persons: Original



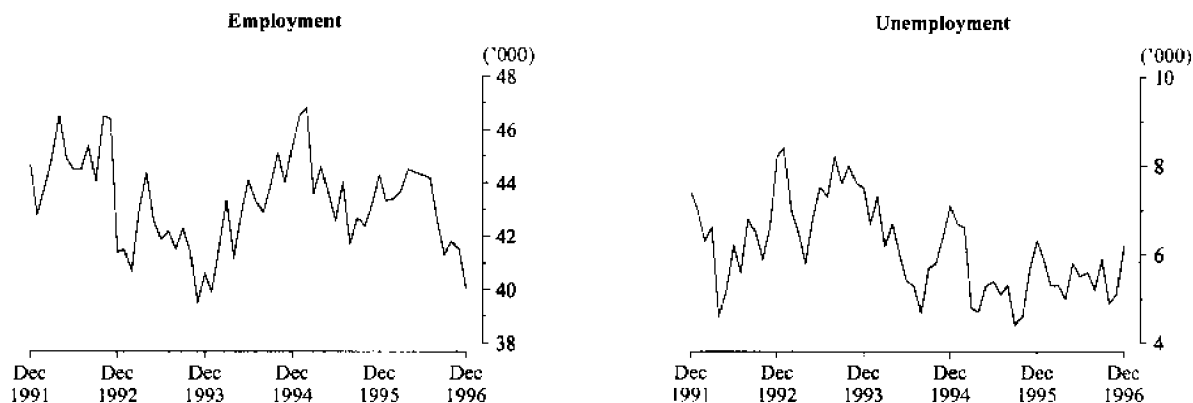
6

LABOUR FORCE STATUS BY REGION, PERSONS^{1, 2}: **Original**

Month		Total employed '000	Total unemployed '000	Unemployment rate %	Participation rate %
HOBART AND SOUTHERN STATISTICAL DIVISIONS					
1993	December	99.6	12.2	10.9	62.1
1995	December	102.3	10.9	9.7	62.1
1996	October	101.5	11.3	10.0	61.7
	November	100.2	10.4	9.4	60.5
	December	103.1	11.3	9.9	62.2
NORTHERN STATISTICAL DIVISION					
1993	December	59.7	7.8	11.5	64.6
1995	December	59.3	6.8	10.3	64.0
1996	October	55.6	7.3	11.6	60.5
	November	56.5	6.7	10.5	60.6
	December	55.5	7.6	12.1	60.4
MERSEY-LYELL STATISTICAL DIVISION					
1993	December	40.6	7.5	15.5	59.5
1995	December	44.3	6.3	12.5	61.5
1996	October	41.8	4.9	10.5	56.7
	November	41.5	5.1	10.9	56.8
	December	40.0	6.2	13.4	57.0
TASMANIA					
1993	December	200.0	27.4	12.1	62.2
1995	December	205.9	24.1	10.5	62.5
1996	October	198.8	23.5	10.6	60.2
	November	198.3	22.2	10.1	59.7
	December	198.6	25.1	11.2	60.6

¹ For explanation of terms and concepts, refer to *Labour Force, Australia*, ABS catalogue number 6203.0.

² Data in this table are original series, i.e. they are not part of a seasonally adjusted or a trend series. Accordingly, care should be exercised when using these data. New monthly data from each quarter (March, June, September and December) are published two months after the quarter. (Source: Labour Force Estimates—microfiche tables.)

Mersey-Lyell Statistical Division—Persons: **Original**

7

TEENAGE LABOUR MARKET^{1, 2}: Original

Month	Employed		Unemployed		Labour force	Not in labour force	Civilian population aged 15-19	Unemployment rate	Unemployment population ratio	Participation rate
	Full-time	Total	Looking for full-time work	Total						
	'000	'000	'000	'000	'000	'000	'000	%	%	%
ATTENDING NEITHER SCHOOL NOR A TERTIARY INSTITUTION FULL TIME										
1994 February	7.4	9.7	3.8	4.1	13.8	1.5	15.3	29.6	26.8	90.1
1996 February	7.5	9.7	3.5	3.7	13.3	1.1	14.4	27.4	25.7	92.6
1996 December	6.7	9.9	2.9	3.6	13.5	2.3	15.7	26.7	22.8	85.6
1997 January	6.7	9.5	3.0	3.0	12.5	2.3	14.7	23.8	20.4	84.7
February	6.7	8.7	3.2	3.2	11.9	2.3	14.3	27.3	22.8	83.6
ATTENDING SCHOOL OR A TERTIARY INSTITUTION FULL TIME										
1994 February	1.0	6.7	1.0	1.9	8.5	10.6	19.1	22.4	9.9	44.5
1996 February	0.6	7.5	0.7	1.4	8.9	10.7	18.6	15.7	7.1	45.4
1996 December	0.4	5.7	0.9	2.7	8.5	10.2	18.5	32.1	14.6	45.5
1997 January	0.7	5.6	1.1	2.9	8.5	11.1	19.5	34.3	14.8	43.3
February	1.0	6.0	0.6	1.7	7.7	12.3	20.0	22.2	8.6	38.6
TOTAL										
1994 February	8.5	16.4	4.9	5.9	22.3	12.1	34.4	26.7	17.2	64.8
1996 February	8.1	17.2	4.2	5.1	22.3	11.8	34.0	22.8	15.0	65.5
1996 December	7.1	15.6	3.8	6.3	21.9	12.4	34.2	28.8	18.4	63.9
1997 January	7.4	15.1	4.0	5.9	20.9	13.3	34.2	28.0	17.3	61.1
February	7.7	14.7	3.7	5.0	19.6	14.5	34.3	25.3	14.5	57.3

¹ Persons aged 15-19 years.

² For explanation of terms and concepts, refer to *Labour Force, Australia*, ABS catalogue number 6203.0. (Source: Labour Force Estimates—microfiche tables.)

ALL EMPLOYED PERSONS BY OCCUPATION¹: Original

Occupation	May 1995		May 1996		Proportion of total employed	
	Persons	Males	Females	Persons	May 1995	May 1996
	'000	'000	'000	'000	%	%
Managers and administrators	19.0	13.6	3.4	17.0	9.4	8.5
Farmers and farm managers	6.5	4.0	0.9	4.9	3.2	2.4
Managing supervisors	6.9	6.5	1.5	8.0	3.4	4.0
Other	5.6	3.1	1.2	4.1	2.8	2.0
Professionals	25.1	12.8	10.7	23.5	12.5	11.7
Building and professional engineers	2.4	1.6	—	1.6	1.2	0.8
Health diagnosis and treatment practitioners	3.0	1.3	1.5	2.8	1.5	1.4
School teachers	8.5	1.4	3.7	5.1	4.2	2.5
Business professionals	3.7	3.8	1.4	5.2	1.9	2.6
Other	7.4	4.7	4.1	8.8	3.7	4.4
Para-professionals	14.3	7.3	5.8	13.1	7.1	6.5
Engineering and building associates and technicians	1.6	1.7	0.1	1.8	0.8	0.9
Registered nurses	5.7	0.4	4.0	4.5	2.8	2.2
Other	7.0	5.2	1.7	6.8	3.5	3.4
Tradespersons	29.1	26.3	3.4	29.7	14.4	14.8
Metal fitting and machining tradespersons	2.8	2.4	—	2.4	1.4	1.2
Electrical and electronics tradespersons	4.0	4.5	0.1	4.6	2.0	2.3
Building tradespersons	6.4	6.9	0.1	7.0	3.2	3.5
Other	15.9	12.4	3.2	15.7	7.9	7.8
Clerks	33.0	8.8	26.1	34.9	16.4	17.4
Stenographers and typists	3.8	0.1	3.3	3.4	1.9	1.7
Receptionists, telephonists and messengers	5.0	1.2	4.6	5.7	2.5	2.8
Other	24.2	7.5	18.2	25.8	12.0	12.8
Salespersons and personal service workers	34.2	9.7	23.0	32.7	17.0	16.3
Sales representatives	2.9	2.0	1.3	3.3	1.4	1.6
Sales assistants	15.3	4.0	10.5	14.5	7.6	7.2
Other	16.0	3.7	11.2	14.9	7.9	7.4
Plant and machine operators, and drivers	16.2	15.1	2.1	17.2	8.0	8.6
Road and rail transport drivers	6.9	6.1	0.6	6.6	3.4	3.3
Machine operators	4.4	3.3	1.5	4.8	2.2	2.4
Other	4.9	5.7	—	5.8	2.4	2.9
Labourers and related workers	30.6	21.2	11.6	32.8	15.2	16.3
Trades assistants and factory hands	5.4	3.7	1.4	5.1	2.7	2.5
Agricultural labourers and related workers	7.0	5.8	2.2	8.1	3.5	4.0
Cleaners	6.4	1.3	4.6	5.9	3.2	2.9
Construction and mining labourers	2.0	2.9	0.1	3.0	1.0	1.5
Other	9.8	7.5	3.3	10.7	4.9	5.3
Total employed	201.4	115.0	86.0	200.9	100.0	100.0

¹ For explanation of terms and concepts, refer to *Labour Force, Australia*, ABS catalogue number 6203.0. (Source: Labour Force Estimates—unpublished data.)

9

EMPLOYED WAGE AND SALARY EARNERS, SECTOR AND INDUSTRY¹: Original

Industry	Employees, February 1995					Percentage distribution	
	Private	Public	Private and public			February 1993	February 1995
	No. ('000)	No. ('000)	Males	Females	Persons		
Agriculture, forestry, fishing and hunting	n.a.	0.7	n.a.	n.a.	n.a.	n.a.	n.a.
Mining	1.5	—	1.4	0.1	1.5	1.7	1.1
Manufacturing	20.3	0.1	15.4	4.9	20.4	14.8	15.2
Electricity, gas and water, construction	6.0	2.7	7.6	1.0	8.7	6.8	6.5
Wholesale and retail trade	26.0	—	15.0	11.0	26.1	20.8	19.4
Transport and storage	3.6	1.5	4.1	1.1	5.2	4.1	3.9
Communication	—	2.3	1.8	0.6	2.3	1.6	1.7
Finance, property and business services	10.1	0.9	4.9	6.0	10.9	9.3	8.1
Public administration and defence	—	10.5	6.5	4.0	10.5	7.0	7.8
Community services	14.0	23.4	11.9	25.5	37.4	24.9	27.8
Recreation, personal and other services	10.2	0.6	4.1	6.7	10.8	8.4	8.0
Total all industries	91.8	42.6	73.2	61.2	134.4	100.0	100.0

¹ For explanation of terms and concepts, refer to *Employed Wage and Salary Earners, Australia*, catalogue number 6248.0. (Source: *Employed Wage and Salary Earners*, ABS catalogue number 6248.0.)

10

AVERAGE HOURS WORKED: Original

Month	Average weekly total hours worked, all employed persons ¹			Average weekly overtime hours ²		Percentage of employees working overtime ²
	Males	Females	Persons	Per employee	Per employee working overtime	
1993						
November	38.2	26.4	33.1	1.0	6.9	14.3
1995						
November	39.7	26.5	33.9	0.9	6.4	14.7
1996						
February	37.7	25.6	32.7	0.9	6.5	14.1
May	40.1	27.0	34.5	0.9	5.6	16.0
August	38.8	27.2	33.9	0.8	5.4	14.4
November	38.7	26.8	33.6	0.8	6.2	12.7

¹ For explanation of terms and concepts, refer to *Labour Force, Australia*, ABS catalogue number 6203.0.

² For explanation of terms and concepts, refer to *Job Vacancies and Overtime, Australia*, ABS catalogue number 6354.0.

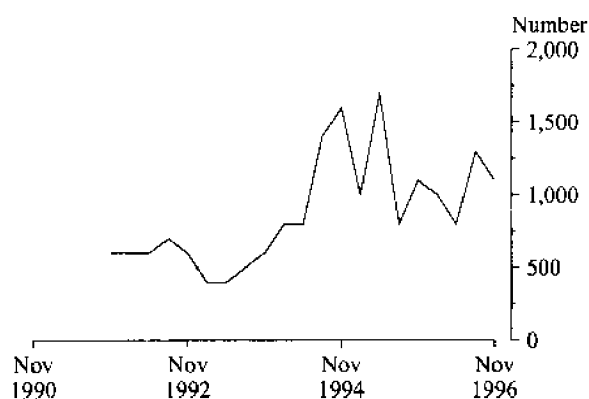
11 JOB VACANCIES¹: Original

Period	Number	Rate ² %
1993		
November	600	0.4
1995		
November	1 100	0.7
1996		
February	1 000	0.6
May	800	0.5
August	1 300	0.8
November	1 100	0.7

¹ For explanation of terms and concepts refer to *Job Vacancies and Overtime, Australia*, catalogue number 6354.0.

² Job vacancies are expressed as a percentage of the number of job vacancies divided by the number of employees plus job vacancies.

JOB VACANCIES: Original



12 INDUSTRIAL DISPUTES¹: Original

Month	Working days lost '000	Twelve months ending	Working days lost per thousand employees no.
1995		1995	
December	0.2	December	22
1996		1996	
January	0.8	January	24
February	0.1	February	23
March	---	March	20
April	0.1	April	20
May	0.2	May	19
June	0.4	June	17
July	4.4	July	39
August	5.2	August	70
September	1.3	September	77
October	0.1	October	77
November	0.3	November	79
December	0.1	December	78
Twelve months ended 1996			
December	13.0		

¹ For explanation of terms and concepts, refer to *Industrial Disputes, Australia*, ABS catalogue number 6321.0.

13

AVERAGE WEEKLY EARNINGS OF EMPLOYEES¹: Original and trend

Quarter	Survey reference period	Full-time adult males		All males	Full-time adult females		All females	Full-time adult persons		All employees
		Weekly ordinary time earnings	Weekly total earnings	Weekly total earnings	Weekly ordinary time earnings	Weekly total earnings	Weekly total earnings	Weekly ordinary time earnings	Weekly total earnings	Weekly total earnings
		\$	\$	\$	\$	\$	\$	\$	\$	\$
ORIGINAL										
1995										
December	17 November	647.90	687.90	615.50	556.10	569.00	403.20	617.30	648.20	513.80
1996										
March	16 February	652.70	691.40	617.80	561.10	569.30	391.80	622.90	651.70	510.00
June	17 May	663.40	702.80	621.90	570.10	583.20	389.30	631.90	662.40	503.30
September	16 August	666.90	699.20	624.30	556.30	567.40	387.70	629.10	654.10	506.50
December	15 November	688.50	728.50	643.00	574.20	584.90	393.70	649.90	680.00	517.70
TREND										
1995										
December	17 November	645.10	685.40	611.40	554.30	565.20	392.80	614.90	645.70	506.40
1996										
March	16 February	653.00	690.90	613.90	560.40	571.10	392.30	621.90	650.70	506.10
June	17 May	662.40	699.60	621.70	564.60	575.90	391.80	629.60	657.80	507.50
September	16 August	672.20	710.10	632.10	566.70	578.40	391.70	636.80	665.70	511.00
December	15 November	683.00	722.30	643.80	567.80	580.00	392.20	644.30	674.60	516.20

¹ For explanation of terms and concepts, refer to *Average Weekly Earnings, States and Australia*, ABS catalogue number 6302.0. (Source: *Average Weekly Earnings, States and Australia*, ABS catalogue number 6302.0.)

14

WEEKLY AWARD RATES OF PAY INDEXES, FULL-TIME ADULT EMPLOYEES¹: Original

(Base: June 1985 = 100.0)

Industry	1994	1996	1996	1997	
	January	January	November	December	January
Mining	137.7	137.7	137.7	137.7	137.7
Manufacturing	146.8	150.0	152.3	152.5	152.5
Electricity, gas and water	132.0	136.4	136.6	136.6	136.6
Construction	142.4	144.0	145.1	145.4	145.4
Wholesale trade	137.8	143.3	143.5	143.5	143.5
Retail trade	136.8	142.7	142.8	142.8	142.8
Transport and storage	138.5	143.3	146.6	146.7	146.7
Communication	135.4	135.4	135.4	135.4	135.4
Finance, property and business services	137.5	139.5	139.6	139.6	139.6
Public administration and defence	147.7	154.7	156.0	156.0	156.0
Community services	140.6	145.0	145.8	145.8	145.8
Recreation, personal and other services	149.2	153.0	153.8	153.8	153.8
Total all industries	141.2	145.1	146.1	146.2	146.2

¹ For explanation of terms and concepts, refer to *Award Rates of Pay Indexes, Australia*, ABS catalogue number 6312.0. (Source: *Award Rates of Pay Indexes, Australia*, ABS catalogue number 6312.0.)

15

SUMMARY OF ANNUAL MOVEMENTS IN WAGES AND PRICES: **Original**

Period	CPI. All groups Hobart	Price index of materials used in house building, All groups, Hobart	Price index of materials used in building other than house building, All groups, Hobart	Average weekly total, earnings, full-time adult employees	Weekly award rates of pay index, full-time adult employees
PERCENTAGE CHANGE FROM PREVIOUS YEAR					
1994					
January	..	2.7	1.8	..	1.5
1996					
January	..	3.2	2.9	..	1.4
1996					
April	..	1.7	1.4	..	1.2
May	..	0.6	1.2	3.7	1.1
June	3.0	0.7	1.0	..	1.3
July	..	- 0.1	1.0	..	0.9
August	..	- 0.2	0.9	3.0	0.9
September	2.3	- 0.2	0.8	..	0.8
October	..	- 0.8	0.4	..	0.9
November	..	- 1.0	0.7	1.9	0.7
December	1.8	- 0.5	1.0	..	0.7
1997					
January	..	- 0.7	0.9	..	0.1

(Sources:

Consumer Price Index, ABS catalogue number 6401.0,

Price Index of Materials Used in House Building, ABS catalogue number 6408.0,

Price Index of Materials Used in Other than House Building, ABS catalogue number 6407.0,

Average Weekly Earnings, States and Australia, ABS catalogue number 6302.0,

Award Rates of Pay Indexes, Australia, ABS catalogue number 6312.0.)

16

HOUSE PRICE INDEX NUMBERS¹, HOBART: **Original**

(Base of each index: 1989-90 = 100.0)

	Established house price index		Project home price index	
	Index	% change ²	Index	% change ²
1993-94	122.5	5.1	117.7	3.2
1994-95	129.0	5.3	121.3	3.1
1995-96	129.8	0.6	123.4	1.7
1994				
December	128.2	—	120.5	0.3
1995				
March	129.4	0.9	121.6	0.9
June	130.1	0.5	123.1	1.2
September	129.2	- 0.7	123.5	0.3
December	129.1	- 0.1	123.5	—
1996				
March	129.8	+ 0.5	123.3	- 0.2
June	131.2	+ 1.1	123.3	—
September	130.2	- 0.8	123.3	—
December	128.5	- 1.3	123.3	—

¹ Used in calculating the mortgage interest charges component of the Consumer Price Index.² Percentage change over previous period.

(Source: House Price Indexes: Eight Capital Cities, ABS catalogue number 6416.0)

17

CONSUMER PRICE INDEX, HOBART AND EIGHT CAPITAL CITIES COMBINED^{1, 2}: Original (Base of each index: year 1989-90 = 100.0)

<i>Hobart</i>						
<i>Period</i>	<i>Food</i>	<i>Clothing</i>	<i>Housing³</i>	<i>Household equipment and operation</i>	<i>Transportation</i>	<i>Tobacco and alcohol</i>
1994						
June	112.2	106.4	94.2	112.4	112.8	134.8
September	113.9	106.6	94.8	112.8	113.9	137.2
December	113.3	105.3	97.6	113.9	115.0	139.1
1995						
March	115.4	105.0	102.7	114.9	115.1	140.3
June	116.1	106.1	104.5	115.4	117.2	143.1
September	117.3	105.9	106.0	116.5	119.4	144.3
December	117.1	105.6	106.5	117.5	120.1	145.9
1996						
March	118.1	106.3	107.2	117.8	119.0	150.3
June	118.4	106.0	107.6	118.5	119.8	153.3
September	120.0	105.9	107.4	119.1	119.7	153.7
December	120.6	105.6	104.8	119.4	121.8	152.7

<i>Period</i>	<i>Hobart</i>			<i>Weighted average of eight capital cities</i>		
	<i>Health and personal care</i>	<i>Recreation and education</i>	<i>Index, all groups</i>	<i>% change over previous period, all groups</i>	<i>Index</i>	<i>% change over previous period</i>
1994						
June	137.9	111.3	112.4	+ 0.4	111.2	+ 0.7
September	138.7	111.7	113.3	+ 0.8	111.9	+ 0.6
December	138.7	113.0	114.2	+ 0.8	112.8	+ 0.8
1995						
March	140.4	115.4	116.1	+ 1.7	114.7	+ 1.7
June	141.0	114.0	117.1	+ 0.9	116.2	+ 1.3
September	146.7	113.3	118.4	+ 1.1	117.6	+ 1.2
December	146.9	115.8	119.2	+ 0.7	118.5	+ 0.8
1996						
March	149.7	117.1	120.1	+ 0.8	119.0	+ 0.4
June	150.5	116.0	120.6	+ 0.4	119.8	+ 0.7
September	154.1	115.1	121.1	+ 0.4	120.1	+ 0.3
December	154.8	116.8	121.3	+ 0.2	120.3	+ 0.2

¹ Further information on construction of CPI indexes is contained in the bulletin *The Australian Consumer Price Index Concepts, Sources and Methods* (Catalogue No. 6461.0).

² The CPI is now published on a reference base of 1989-90 = 100.0.
(Source: *Consumer Price Index*, ABS catalogue number 6401.0.)

18

PRICE INDEX OF MATERIALS USED IN BUILDING OTHER THAN HOUSE BUILDING, HOBART: **Original**
(Base year: 1989-90 = 100.0)

<i>Index numbers for selected major building materials</i>						
<i>Period</i>	<i>Structural timber</i>	<i>Clay bricks</i>	<i>Ready mixed concrete</i>	<i>Precast concrete products</i>	<i>Steel decking, cladding etc.</i>	<i>Structural steel</i>
1995						
November	120.1	123.2	116.3	130.3	111.0	120.9
December	120.1	123.3	114.5	130.4	111.0	121.9
1996						
January	120.1	123.3	116.9	130.4	111.0	121.9
February	116.9	123.3	115.9	128.4	112.1	121.9
March	116.9	123.7	113.2	128.4	112.3	121.9
April	116.9	123.7	113.2	128.4	112.3	122.7
May	114.4	123.7	112.9	128.4	112.3	122.7
June	113.8	124.5	112.1	128.4	112.3	123.7
July	114.5	124.5	114.2	132.6	112.3	125.2
August	112.7	124.5	115.5	132.6	112.3	126.0
September	112.7	124.5	114.7	132.6	112.3	124.7
October	110.6	124.5	115.8	132.6	112.3	124.7
November p	110.3	125.6	115.8	132.6	112.2	126.5
December p	108.9	125.6	116.3	132.6	112.2	126.7
1997						
January p	108.9	125.7	116.3	132.6	112.2	126.7

<i>Index numbers for selected major building materials</i>							
<i>Period</i>	<i>Reinforcing steel bar, fabric and mesh</i>	<i>Aluminium windows</i>	<i>Fabricated steel products</i>	<i>Builders' hardware</i>	<i>Sand & aggregate</i>	<i>Paint & other coatings</i>	<i>Non-ferrous pipes & fittings</i>
1995							
November	109.2	104.5	108.3	119.2	133.1	118.7	169.1
December	109.2	104.5	108.3	117.7	133.1	121.4	169.1
1996							
January	109.2	104.5	108.3	118.3	133.1	121.5	169.1
February	109.2	104.5	108.1	117.7	133.1	121.5	169.4
March	109.2	104.7	108.3	117.7	133.1	121.5	169.4
April	109.2	104.4	111.5	117.3	133.1	118.1	172.8
May	109.2	104.4	111.5	116.0	133.1	120.6	174.5
June	109.2	104.4	111.9	116.1	133.1	124.5	174.5
July	109.2	104.4	111.9	115.4	133.1	126.1	168.7
August	110.7	104.4	112.4	118.9	133.1	126.1	167.9
September	110.8	104.4	113.6	119.0	133.1	126.7	167.9
October	110.9	105.5	113.6	119.1	133.1	126.7	160.8
November p	110.9	105.5	113.4	119.1	133.1	127.0	160.9
December p	110.9	105.5	113.4	118.2	133.1	128.2	162.4
1997							
January p	110.9	106.8	113.4	118.2	135.0	127.8	162.4

(Source: Price Index of Materials Used in Other than House Building, ABS catalogue number 6407.0.)

continued

18

PRICE INDEX OF MATERIALS USED IN BUILDING OTHER THAN HOUSE BUILDING, HOBART: **Original**—continued
(Base year: 1989-90 = 100.0)

Period	All electrical materials		All mechanical services		All plumbing materials	
	Index	% change over previous period	Index	% change over previous period	Index	% change over previous period
1995						
November	118.7	—	114.7	-0.4	127.4	—
December	118.5	-0.2	114.8	+0.1	127.5	+0.1
1996						
January	117.8	-0.6	114.8	—	127.5	—
February	117.8	—	115.4	+0.5	127.6	+0.1
March	118.6	+0.7	115.7	+0.3	127.6	—
April	118.3	-0.3	116.1	+0.3	126.6	-0.8
May	119.6	+1.1	116.1	—	127.1	+0.4
June	119.5	-0.1	116.5	+0.3	127.3	+0.2
July	119.5	—	116.3	-0.2	127.0	-0.2
August	113.7	-4.9	117.4	+0.9	126.0	-0.8
September	113.9	+0.2	117.6	+0.2	126.0	—
October	118.3	+3.9	117.3	-0.3	120.4	-4.4
November p	118.3	—	116.5	-0.7	120.7	+0.2
December p	118.3	—	116.5	—	121.2	+0.4
1997						
January p	118.4	+0.1	116.6	+0.1	120.8	-0.3
All groups excluding electrical materials and mechanical services						
Period	Index	% change over previous period	All groups			
			Index	% change over previous period		
1995						
November	115.7	-0.1	115.3	-0.2		
December	115.5	-0.2	115.1	-0.2		
1996						
January	115.9	+0.3	115.3	+0.2		
February	115.6	-0.3	115.2	-0.1		
March	115.3	-0.3	115.1	-0.1		
April	115.2	-0.1	115.1	—		
May	115.3	+0.1	115.2	+0.1		
June	115.3	—	115.3	+0.1		
July	116.1	+0.7	115.8	+0.4		
August	116.5	+0.3	115.9	+0.1		
September	116.3	-0.2	115.8	-0.1		
October	116.2	-0.1	116.0	+0.2		
November p	116.6	+0.3	116.1	+0.1		
December p	116.7	+0.1	116.2	+0.1		
1997						
January p	116.8	+0.1	116.3	+0.1		

(Source: Price Index of Materials Used in Other than House Building, ABS catalogue number 6407.0.)

Year or month	Dairy products ¹			Staff-hours worked ²	
	Whole milk ³	Factory butter ⁴	Factory cheese	Textile manufacturing ⁵	Vegetable preserving
	million litres	tonnes	tonnes	'000	'000
1993-94	447.3	7 846	22 461	1 575	2 002
1994-95	436.5	8 105	20 529	1 527	1 838
1995-96	513.8	9 589	25 371	1 443	1 784
1993					
December	58.1	801	3 315	109	146
1995					
December	65.4	988	3 935	104	126
1996					
October	69.3	1 333	3 021	125	119
November	74.4	1 367	3 478	119	107
December	70.9	1 166	3 500	104	n.y.a
Year or month	Newsprint ⁶	Refined zinc	Metal, refin. index ⁷	Electricity	Gas
	'000 tonnes	'000 tonnes		million kW.h	'000 MJ
1993-94	208.9	193.8	105.5	8 855	55 767
1994-95	222.7	189.8	98.3	8 688	51 933
1995-96	242.9	207.8	104.7	9 100	41 035
1993					
December	14.9	16.0	108.6	703	3 449
1995					
December	19.9	18.6	109.1	706	2 525
1996					
October	18.1	17.1	116.6	790	1 500
November	19.7	17.6	116.5	776	1 000
December	18.2	17.6	120.7	760	500

¹ Source: Australian Dairy Corporation.

² Changing productivity per staff-hour makes these indicators unsatisfactory for long-term comparisons.

³ Includes the whole milk equivalent of farm cream intake.

⁴ Includes butter equivalent of butter oil.

⁵ Includes spinning, weaving and carpet making. Reported by establishments which manufacture textiles only, or manufacture clothing and textiles in the one plant.

⁶ Excludes production of directory newsprint and high grade specialty paper.

⁷ Metallurgical refining index (Base: 1979-80 = 100.0) Output from selected establishments covering the smelting and refining of ferro-alloys, zinc and aluminium. The weighting pattern is based on the establishments' value added as derived from the 1979-80 Manufacturing Census. For multi-product establishments, value added was apportioned to products on the basis of gross receipts from each product.

(Source: ABS unpublished data.)

20

LIVESTOCK SLAUGHTERING: **Original**

Year or month	Cattle			Sheep	Lambs	Pigs
	Bulls, bullocks and steers	Cows and heifers	Calves			
	'000	'000	'000			
1993-94	101.8	85.2	23.2	526.1	437.8	95.8
1994-95	111.2	96.7	28.8	569.3	477.2	92.9
1995-96 p	99.2	85.7	41.7	390.2	410.0	81.8
1995						
January	11.3	7.9	0.1	50.1	40.7	5.8
1996						
January p	11.2	6.8	0.1	43.6	38.9	6.1
February p	8.6	7.8	0.1	39.8	40.4	6.3
March p	9.0	8.9	0.2	40.6	41.2	7.2
April p	6.6	6.4	0.9	31.4	30.7	6.0
May p	10.8	10.7	1.4	42.5	39.7	7.3
June p	9.1	9.0	0.7	30.6	33.1	6.6
July p	7.6	5.5	1.8	22.9	26.0	6.8
August p	6.4	4.2	13.5	12.2	21.6	5.9
September p	6.6	4.8	17.0	13.1	26.2	5.9
October p	7.9	6.0	6.2	20.6	25.9	5.5
November p	9.8	7.8	0.6	36.5	28.0	5.2
December p	12.9	8.6	0.2	48.8	29.1	6.6
1997						
January p	12.8	7.7	0.1	55.8	45.0	6.4

(Source: *Livestock Products, Australia*, ABS catalogue number 7215.0.)

21

LIVESTOCK SLAUGHTERING: **Seasonally adjusted and trend**

Month	Seasonally adjusted			Trend		
	Cattle and calves	Sheep and lambs	Pigs	Cattle and calves	Sheep and lambs	Pigs
	'000	'000	'000	'000	'000	'000
1995						
January	22.1	78.4	7.2	21.4	85.4	7.7
1996						
January	18.8	71.7	7.4	19.3	69.3	6.9
February	17.9	64.2	6.8	18.9	67.6	6.9
March	18.3	63.5	7.0	18.6	66.0	6.8
April	16.0	60.0	6.6	18.6	64.6	6.7
May	21.8	69.4	6.4	19.0	63.3	6.6
June	21.2	61.2	6.2	19.6	61.6	6.5
July	18.0	67.9	6.9	20.0	59.6	6.3
August	19.6	50.8	6.0	20.4	57.8	6.1
September	22.8	55.3	6.4	20.7	57.7	5.9
October	19.7	55.5	5.6	21.0	60.0	5.8
November	20.6	64.9	5.2	21.5	64.5	5.9
December	23.8	69.6	5.6	22.9	69.7	6.0
1997						
January	21.5	81.7	7.0	22.2	74.7	6.2

(Source: ABS unpublished data)

22

MEAT PRODUCTION¹: Original

Year or month	Beef tonnes	Veal tonnes	Mutton tonnes	Lamb tonnes	Pigmeat ² tonnes	Total tonnes
1993-94	47 458	515	9 992	7 047	6 019	71 031
1994-95	49 907	977	11 230	8 412	5 982	76 509
1995-96 p	44 812	1 091	8 283	7 727	5 346	67 259
1995						
January	4 787	11	969	681	381	6 829
1996						
January p	4 467	4	937	733	397	6 538
February p	4 122	5	852	761	410	6 150
March p	4 175	9	860	777	470	6 290
April p	3 012	26	657	579	397	4 671
May p	5 230	42	892	749	476	7 389
June p	4 429	21	638	624	430	6 143
July p	3 203	48	475	488	443	4 657
August p	2 564	344	249	407	385	3 949
September p	2 811	430	269	493	384	4 387
October p	3 375	157	425	488	360	4 804
November p	4 218	17	792	527	342	5 897
December p	5 524	7	1 081	547	430	7 590
1997						
January p	5 145	4	1 197	848	430	7 625

¹ Carcass weight.

² Includes pork used for production of bacon and ham.

(Source: Livestock Products, Australia, ABS catalogue number 7215.0.)

23

PRINCIPAL MINERAL CONCENTRATES PRODUCED: Original

Year or quarter	Copper	Iron (pellets)	Lead	Lead- zinc	Tin	Zinc
Year or quarter	'000 tonnes	'000 tonnes	'000 tonnes	'000 tonnes	'000 tonnes	'000 tonnes
1993-94	128.1	1 565.9	93.4	57.5	13.4	316.5
1994-95	59.4	1 483.8	97.4	45.3	14.3	350.6
1995-96	53.5	1 681.3	106.3	38.6	16.0	361.5
1995						
September	4.5	463.0	28.4	11.2	4.1	93.6
December	7.8	416.0	29.7	6.8	4.1	98.1
1996						
March	19.8	326.9	24.1	11.4	3.5	84.8
June	21.5	475.4	24.1	9.2	4.3	85.0
September	26.0	439.3	30.6	10.3	3.9	88.6
December p	25.6	366.7	24.9	11.0	4.0	89.5

(Source: Tasmania--Development and Resources)

24

SAWMILLS AND PLYWOOD MILLS, LOGS DELIVERED AND TIMBER PRODUCED: **Original**

Year or quarter	Tasmanian-grown logs delivered					Sawn, peeled and sliced timber produced ¹				
	Eucalypts	Hardwoods, excluding eucalypts ²	Plant-ation ³	Native softwoods ⁴	Total	Eucalypts	Hardwoods, excluding eucalypts ²	Plant-ation ³	Native softwoods ⁴	Total
1993-94	584.3	15.3	299.2	1.5	900.4	203.5	3.1	141.0	0.5	348.0
1994-95	653.1	12.6	304.9	2.8	973.4	212.5	4.3	142.7	0.6	360.1
1995-96	602.8	13.0	343.7	1.4	960.9	192.4	4.4	152.0	0.5	349.3
1994										
December	163.0	3.7	68.8	0.3	235.8	55.2	1.0	36.1	0.2	92.5
1995										
March	132.3	3.0	82.5	1.1	218.9	44.5	1.0	37.0	0.1	82.6
June	187.6	2.1	77.4	0.7	267.8	53.4	1.1	34.6	0.1	89.2
September	184.3	1.8	79.9	0.2	266.2	55.4	1.3	36.0	0.1	92.8
December	139.1	1.5	70.2	0.2	211.0	49.0	1.0	36.0	0.2	86.2
1996										
March	136.6	6.7	98.1	0.3	241.7	41.5	0.9	41.2	0.1	83.7
June	142.9	3.0	95.5	0.6	242.0	46.5	1.2	38.8	0.1	86.6
September	134.4	2.4	97.3	—	234.1	47.3	1.1	43.0	0.1	91.4
December	111.8	3.7	83.3	0.5	199.3	40.1	0.9	41.2	0.1	82.3

¹ Includes plywood, veneer and sliced timber production converted to an equivalent cubic measurement.

² Includes blackwood, myrtle, sassafras etc.

³ Radiata pine.

⁴ Includes Huon pine, celery top pine and King William pine.

(Source: ABS unpublished data.)

25

CHIPPING AND GRINDING OF WOOD¹: **Original**

Year or quarter	Producing locations ²	Materials used ³		
		Logs delivered ⁴	Sawmill offcuts	Chipped and ground wood production
		no.	'000 m ³	'000 m ³
1993-94	30	3 448.8	339.8	3 726.1
1994-95	31	4 064.1	394.2	4 343.1
1995-96	31	3 510.0	457.9	3 820.1
1994				
December	31	1 065.8	92.0	1 115.4
1995				
March	31	1 090.6	95.7	1 177.1
June	31	967.9	120.1	1 059.3
September	32	935.6	118.2	1 044.1
December	31	932.1	104.6	939.9
1996				
March	32	842.6	109.8	958.0
June	31	799.6	125.3	878.1
September	30	767.5	133.5	870.9
December	30	805.1	117.9	908.4

¹ Both hardwoods and softwoods, separate details are not available.

² Capable of producing at end of year or actually producing during quarter.

³ Data reported by weight, converted to cubic measure by the factor 0.95 m³ per tonne.

⁴ Includes log equivalent of limbwood and billets.

(Source: ABS unpublished data.)

Year or quarter	Sawmilling and plywood milling			Chipping and grinding ¹			Total		
	Crown land ²	Private land	Total	Crown land ²	Private land	Total	Crown land ²	Private land	Total
	'000 m ³	'000 m ³	'000 m ³	'000 m ³	'000 m ³	'000 m ³	'000 m ³	'000 m ³	'000 m ³
1993-94	696.5	203.9	900.4	1 697.0	1 751.8	3 448.8	2 393.5	1 955.7	4 349.2
1994-95	780.3	193.2	973.4	1 966.8	2 097.3	4 064.1	2 747.1	2 290.4	5 037.6
1995-96	773.5	187.4	960.9	1 579.6	1 930.4	3 510.0	2 353.1	2 117.8	4 470.9
1994									
December	180.6	55.2	235.8	467.9	597.8	1 065.8	648.5	653.0	1 301.6
1995									
March	184.7	34.2	218.9	480.3	610.3	1 090.6	665.0	644.5	1 309.5
June	215.2	52.7	267.8	537.6	430.3	967.9	752.8	483.0	1 235.8
September	214.1	52.2	266.2	438.2	497.4	935.6	652.2	549.6	1 201.9
December	165.2	45.8	211.0	388.3	543.8	932.1	553.5	589.6	1 143.1
1996									
March	202.3	39.4	241.7	405.3	437.3	842.6	607.6	476.7	1 084.3
June	191.9	50.1	242.0	347.9	451.8	799.6	539.7	501.8	1 041.6
September	194.2	39.9	234.1	403.5	364.0	767.5	597.8	403.9	1 001.7
December	162.5	36.8	199.3	411.0	394.1	805.1	573.4	430.9	1 004.3

¹ Logs used are generally below sawmilling standard; includes log equivalent of limbwood and billets.

² Comprises all areas (including concession areas) from which royalties are payable to Forestry Tasmania.
(Source: ABS unpublished data.)

27

BUILDING APPROVALS: Original

Year or month	New residential building			Total dwelling units	Value				
	Houses	Other ¹	Conversions etc.		New dwelling units	Alterations and additions ² to residential building	Non-residential building ³		Total of all building
							Private	Total	
no.	no.	no.	no.	\$'000	\$'000	\$'000	\$'000	\$'000	
1993-94	3 113	1 034	11	4 158	301 963	39 522	81 251	145 922	487 407
1994-95	2 576	596	14	3 176	244 623	39 963	117 984	161 567	446 152
1995-96	1 938	601	7	2 546	217 445	36 890	119 849	216 752	471 086
1994									
January	233	111	1	345	25 992	3 095	10 492	11 816	40 902
1996									
January	135	92	1	228	23 749	3 199	18 028	42 277	69 225
1996									
October	154	33	3	190	17 314	3 530	9 585	10 647	31 491
November	146	22	—	168	13 351	3 347	6 375	7 262	23 960
December	130	23	—	153	12 943	2 371	3 796	4 396	19 710
1997									
January	118	25	10	153	12 241	3 513	9 258	10 878	26 632

¹ New individual dwelling units (e.g. flats, home units and villa units).

² Valued at \$10,000 and over.

³ Comprises non-residential building (new plus alterations and additions) valued at \$50,000 and over.

(Source: *Building Approvals, Tasmania*, ABS catalogue number 8731.6.)

28

SECURED HOUSING COMMITMENTS¹: Original, seasonally adjusted and trend

Month	Total number of dwellings ²			Total value of commitments		
	Original	Seasonally adjusted	Trend	Original	Seasonally adjusted	Trend
	no.	no.	no.	\$'000	\$'000	\$'000
1995						
December	864	931	957	59.6	63.0	65.7
1996						
January	840	951	933	59.1	63.0	63.8
February	911	887	904	63.3	62.7	61.6
March	988	884	877	69.4	61.0	59.9
April	849	888	859	58.9	61.3	59.4
May	942	825	857	64.7	55.6	60.9
June	841	830	872	58.3	61.0	64.0
July	1 032	1 012	1 069	66.1	64.7	68.0
August	1 163	1 175	1 085	77.2	79.6	71.0
September	1 067	1 098	1 076	68.8	70.4	71.7
October	1 117	1 155	1 038	75.9	80.8	69.8
November	909	924	981	60.7	61.5	66.0
December	r 797	r 845	917	54.4	57.5	61.6
1997						
January	742	810	855	49.5	51.6	57.0

¹ Commitment is a firm offer of housing finance. It either has been, or is normally expected to be, accepted. Includes commitments to provide housing finance to employees and commitments accepted and cancelled in the same month. Excludes alterations and additions. Includes refinancing.

² Includes new dwellings, established dwellings and refinancing. Excludes alterations and additions.

(Source: *Housing Finance for Owner Occupation, Australia*, ABS catalogue 5609.0.)

Month	Deposits				
	Current bearing interest	Current – not bearing interest	Fixed	Investment savings accounts	Statement savings accounts
	\$m	\$m	\$m	\$m	\$m
1996					
January	646	272	1 646	546	190
February	665	265	1 639	544	174
March	690	271	1 657	550	160
April	689	270	1 693	547	160
May	674	262	1 697	541	158
June	659	260	1 707	541	158
July	687	253	1 737	540	161
August	692	249	1 758	543	163
September	690	240	1 768	552	165
October	699	238	1 787	559	168
November	692	237	1 791	560	169
December	699	244	1 771	570	188
1997					
January	662	246	1 763	583	235

Month	Deposits				Loans ²
	Passbook/School savings accounts	Other	Total		
	\$m	\$m	\$m	\$m	
1996					
January	175	127	3 601	4 372	
February	171	127	3 585	4 422	
March	171	128	3 626	4 450	
April	168	130	3 657	4 471	
May	164	127	3 623	4 511	
June	161	128	3 615	4 529	
July	156	127	3 660	4 532	
August	153	127	3 685	4 541	
September	151	129	3 694	4 520	
October	147	129	3 728	4 545	
November	140	132	3 722	4 513	
December	134	133	3 739	4 533	
1997					
January	127	129	3 745	4 466	

¹ Details are the averages of weekly figures for each month. The figures are derived from returns submitted by banks authorised under the *Banking Act* together with similar returns voluntarily submitted by the State banks; they exclude the Reserve Bank.

² Excludes non-resident loans.

(Source: Reserve Bank of Australia.)

Year or quarter	New buildings and structures		Equipment, plant, and machinery		Total
	\$m	\$m	\$m	\$m	
1993–94	100	341	441		
1994–95	133	503	636		
1995–96	178	394	571		
1995					
September	50	93	143		
December	46	91	137		
1996					
March	45	94	139		
June	37	116	153		
September	33	95	128		

¹ Estimates based on a sample survey and therefore subject to sampling variability. Covers selected industries only—mining, manufacturing, finance, property and other selected industries.

(Source: *State Estimates of Private New Capital Expenditure*, ABS catalogue number 5646.0.)

31

PASSENGER ARRIVALS AND DEPARTURES, TASMANIA¹: Original

Period	By air		By sea	Total	Total departures ²	Cruise ships	
	Interstate arrivals	International arrivals				Arrivals	Departures
1993	694 244	5 144	115 381	814 769	814 835	2 033	2 033
1994	745 508	4 166	128 644	878 318	880 936	6 592	6 592
1995	811 784	3 982	116 869	932 635	931 278	6 199	6 199
1996	829 654	2 999	115 486	948 139	960 569	5 286	5 286
1995							
December	84 067	452	11 972	96 491	80 306	1 590	1 590
1996							
October	68 956	352	10 073	79 381	79 774	—	—
November	68 037	431	11 341	79 809	78 803	—	—
December	79 002	295	12 703	92 000	80 667	850	850

¹ The following persons are not included in these statistics: passengers under three years of age accompanied by an adult; passengers travelling on chartered flights with minor carriers; passengers travelling on private or VIP flights; and passengers from or departing for overseas other than direct flights to New Zealand.

² The proportion of departing passengers who were visitors was shown to be about 58% in the 1981 Tasmanian Visitor Survey, 55% in the 1984 Tasmanian Visitor Survey, 53% in the 1986 Tasmanian Visitor Survey, 65% in the 1990 Tasmanian Visitor Survey, 60% in the 1994 survey, and 58% in the 1995 Tasmanian Visitor Survey.

(Source: Tourism Tasmania.)

32

TOTAL PASSENGER ARRIVALS BY AIR AND SEA, TASMANIA: Original, seasonally adjusted and trend

Period	Original	Seasonally adjusted ¹	Trend
1995			
December	96 491	77 749	77 754
1996			
October	79 381	81 475	80 076
November	79 809	81 484	78 838
December	92 000	73 496	77 759

¹ There is an annual recalculation of seasonal adjustment factors to include the most recent year's arrivals. This occurs at the end of each financial year and may cause revisions to previously published seasonally adjusted and trend figures. A full time series of seasonally adjusted and trend series from January 1971 is available on request, telephone (03) 6220 5870.

(Source: Tourism Tasmania. ABS unpublished data.)

HOTELS, MOTELS, ETC. WITH FACILITIES						
Period	Original		Room nights		Original	
	Establishments ¹ no.	Guest rooms ¹ no.	Seasonally adjusted ² no.	Trend estimates ² no.	Room occupancy rate %	Takings from accommodation \$'000
December quarter						
1994	177	5 354	n.a.	n.a.	55.4	20 159
1995	180	5 503			57.0	22 090
1996	187	5 604			54.8	22 556
1994						
October	n.a.	n.a.	87 143	88 037	55.0	6 532
November	n.a.	n.a.	85 236	87 545	60.5	7 071
December	177	5 354	88 136	87 108	50.9	6 557
1995						
October	n.a.	n.a.	88 438	91 208	55.9	7 269
November	n.a.	n.a.	93 421	91 108	63.4	7 850
December	180	5 503	91 340	90 882	52.1	6 971
1996						
October	n.a.	n.a.	89 296	87 924	55.0	7 577
November	n.a.	n.a.	92 164	88 306	60.0	7 916
December	187	5 604	86 152	88 457	49.2	7 063
HOLIDAY UNITS						
Period	Original		Unit nights		Original	
	Establishments ¹ no.	Units ¹ no.	Seasonally adjusted ² no.	Trend estimates ² no.	Unit occupancy rate %	Takings from accommodation \$'000
December quarter						
1994	52	816	n.a.	n.a.	57.0	3 036
1995	54	830			52.8	2 958
1996	57	861			52.9	2 990
1994						
October	n.a.	n.a.	13 821	13 544	58.4	1 017
November	n.a.	n.a.	13 932	13 743	59.9	999
December	52	816	13 433	14 000	52.8	1 020
1995						
October	n.a.	n.a.	12 224	12 641	50.7	928
November	n.a.	n.a.	13 331	12 773	56.4	1 011
December	54	830	13 329	12 820	51.5	1 019
1996						
October	n.a.	n.a.	12 999	12 835	52.0	953
November	n.a.	n.a.	13 759	13 250	56.2	1 020
December	57	861	13 628	13 571	50.7	1 017
CARAVAN PARKS						
Period	Original		Site nights		Original	
	Establishments ¹ no.	Sites and cabins ¹ no.	Seasonally adjusted ² no.	Trend estimates ² no.	Site occupancy rate %	Takings from accommodation \$'000
December quarter						
1994	75	6 953	n.a.	n.a.	30.4	1 818
1995	72	6 440			33.2	1 923
1996	73	6 500			33.1	1 983
1994						
October	n.a.	n.a.	66 032	65 758	27.9	525
November	n.a.	n.a.	66 797	65 634	29.8	589
December	75	6 953	65 194	65 284	33.6	704
1995						
October	n.a.	n.a.	64 974	65 396	30.0	583
November	n.a.	n.a.	65 367	65 686	32.4	616
December	72	6 440	66 831	65 882	37.2	724
1996						
October	n.a.	n.a.	66 373	67 199	30.8	596
November	n.a.	n.a.	67 509	66 920	32.3	644
December	73	6 500	66 060	66 500	36.2	742

¹ At end of quarter. ² Seasonally adjusted and trend estimates are revised annually because of yearly seasonal re-analysis.
(Source: *Tourist Accommodation, Tasmania*, ABS catalogue number 8635.6.)

34 REGISTRATIONS OF NEW MOTOR VEHICLES¹: Original

Year or month	Passenger vehicles	Other vehicles ²	Total (excl. motor cycles)	Vehicles registered by vehicle rental businesses ³	Motor cycles
	no.	no.	no.	no.	no.
1994	10 543	2 837	13 380	1 708	376
1995	10 919	2 874	13 793	1 952	393
1996	11 445	2 726	14 171	2 384	462
1995					
January	679	200	879	7	35
1996					
January	670	203	873	5	36
February	777	212	989	62	48
March	764	197	961	3	33
April	659	159	818	—	30
May	916	286	1 202	3	44
June	744	250	994	9	32
July	1 099	242	1 341	232	26
August	1 040	296	1 336	216	52
September	1 171	177	1 348	448	38
October	1 042	265	1 307	213	35
November	1 072	195	1 267	370	50
December	1 491	246	1 737	823	48
1997					
January	756	179	935	4	49

¹ Includes State and Commonwealth Government-owned motor vehicles other than those belonging to the defence services. Excludes tractors, plant and equipment, caravans and trailers.

² Comprises utilities, panel vans, rigid and articulated trucks and other truck-type vehicles (i.e. motor vehicles designed for purposes other than freight carrying, e.g. campervans, tow trucks, ambulances and hearses) and buses.

³ These figures are included in previous columns.

(Source: *Motor Vehicle Registrations Australia*, ABS catalogue number 9301.0. ABS unpublished data.)

35 TURNOVER OF RETAIL ESTABLISHMENTS AT CURRENT PRICES¹: Original and trend

Period	Original \$m	Trend estimates	
		\$m	Change from corresponding month of previous year %
1995			
January	220.9	230.3	- 0.7
1996			
January	240.5	244.6	6.2
February	233.5	246.2	6.1
March	241.3	247.2	5.7
April	237.8	247.3	5.0
May	250.3	246.7	4.3
June	230.6	245.5	3.6
July	229.1	244.3	3.1
August	238.2	243.7	2.8
September	222.5	243.9	2.6
October	249.1	244.9	2.5
November	257.9	246.3	2.3
December	324.3	247.6	2.1
1997			
January	247.7	249.0	1.8

¹ Survey has been re-designed—see Information Paper (8511.0).
(Source: *Retail Trade, Australia*, ABS catalogue number 8501.0.)

	NSW	Vic.	Qld	SA	WA	Tas.	Aust. ¹
Population							
Estimated resident population, September 1996 ('000) p	6 207.9	4 552.0	3 373.2	1 480.2	1 771.0	473.4	18 348.7
Proportion of Australian population, September 1996 (%) p	33.8	24.8	18.4	8.1	9.7	2.6	100.0
Population growth rate, 12 months to September 1996 (%) p	1.2	0.9	2.3	0.4	1.8	—	1.3
Labour Force							
Employment growth, 12 months to February 1997 (trend series) (%)							
Males	1.0	0.9	0.8	- 0.5	2.7	- 2.5	0.9
Females	0.9	2.3	2.9	1.9	3.8	- 3.6	1.8
Persons	1.0	1.5	1.7	0.5	3.2	- 3.0	1.3
Unemployment rate (trend series), February 1997 (%)	8.0	9.0	9.7	9.4	7.6	10.7	8.6
Unemployment growth, 12 months to February 1997 (trend series) (%)	3.2	4.7	8.0	- 0.3	2.0	3.1	3.6
Participation rate (trend series), February 1997 (%)	62.3	63.9	64.5	61.7	66.5	59.4	63.6
Average weekly overtime worked per employee, November 1996 (hours)	1.2	1.3	1.0	1.0	1.2	0.8	1.1
Job vacancy rate, November 1996 (%)	1.1	0.8	0.8	0.5	1.3	0.7	0.9
Working days lost through industrial disputes, 12 months to December 1996 (days per '000 employees)	162	113	162	80	68	78	131
Wages and Prices							
Average weekly total earnings, full-time adult employees (trend series) November 1996 (\$)							
Males	826.7	779.6	726.5	725.9	802.4	722.3	786.1
Females	658.2	619.6	589.5	587.8	602.6	580.8	627.6
Persons	763.8	724.2	678.8	681.7	730.1	674.6	729.0
Average weekly total earnings, full-time adult employees, growth rate, 12 months to November 1996 (%)	3.6	4.1	5.0	4.3	2.2	4.5	4.0
Consumer price index, all groups, annual growth to December quarter 1996 (%) ²	1.8	1.2	1.9	1.2	1.8	1.8	1.5
Building							
% change in the number of new residential dwelling units approved in 12 months ended January 1997, over the same period previous year	- 4.7	- 5.7	- 1.5	- 17.9	- 10.1	- 24.7	- 6.2
Finance and Retail Trade							
% change in private new capital expenditure, 12 months ended September 1996, over the same period previous year	9.9	33.3	12.3	2.2	- 0.8	- 17.6	14.2
% change in trend estimates turnover of retail establishments, January 1997 (change from corresponding month of the previous year)	0.1	5.6	0.3	- 0.3	- 0.4	1.8	1.4
Transport							
% change in number of new motor vehicles (excluding motorcycles) registered 12 months ended January 1997, over the same period previous year	- 0.1	4.9	3.0	- 0.7	9.1	3.3	2.4
Agriculture							
% change in the number of livestock slaughtered 12 months ended January 1997 over the same period previous year							
Cattle and calves	2.0	4.7	- 13.4	- 14.2	0.1	- 2.5	- 3.3
Sheep and lambs	- 1.5	- 5.4	19.5	- 10.2	11.3	- 13.4	- 2.2
Tourism							
Room occupancy rates for hotels, motels etc. with facilities, September quarter 1996 (%)	59.1	52.0	65.5	48.9	62.0	38.7	58.8
Australian National and State Accounts							
% change in GSP (GDP), Average 1989-90 Prices Trend Series							
June qtr 1996 to Sept. qtr 1996	0.9	0.2	1.3	—	0.3	- 0.5	0.5
Sept. qtr 1995 to Sept. qtr 1996	3.7	2.4	5.9	2.0	5.5	1.9	3.9

¹ Australian totals include the ACT and NT.² CPI applies to State capitals.

EXPLANATORY NOTES

INTRODUCTION

1 This publication contains latest figures for a comprehensive range of economic indicators. Statistics shown in this publication are the latest available at the date of preparation and may be subject to revision in subsequent issues. In a number of cases figures appearing in this publication are preliminary and are subject to revision in subsequent issues. Reference should therefore always be made to the latest issue or to the statistical publication on the specific subject.

SEASONAL ADJUSTMENT AND TREND ESTIMATION

2 Seasonal adjustment is a means of removing the estimated effects of normal seasonal variation from the series so that the effects of other influences on the series can be more clearly recognised. Seasonal adjustment does not aim to remove the irregular or non-seasonal influences which may be present in any particular month. This means that month-to-month movements of the seasonally adjusted estimates may not be reliable indicators of trend behaviour.

3 The smoothing of seasonally adjusted series reduces the impact of the irregular components of the seasonally adjusted series and creates trend estimates. These trend estimates are derived by applying a 13-term Henderson-weighted moving average to all months except the last six. The last six monthly trend estimates are obtained by applying surrogates of the Henderson average to the seasonally adjusted series. Trend series are used to analyse the underlying behaviour of the series over time.

4 While this smoothing technique enables estimates to be produced for the latest month, it does result in revisions to the most recent months as additional observations become available. Generally, subsequent revisions become smaller and after 3 months have a negligible impact on the series. Revisions also occur as a result of the annual review of seasonal factors.

5 Users may wish to refer to the ABS Publication *A Guide to Interpreting Time Series – Monitoring 'Trends' – An Overview* (1348.0) for more detailed information on smoothing seasonally adjusted time series data.

RELATED PUBLICATIONS

6 Current publications produced by the ABS are listed in the *Catalogue of Publications and Products* (1101.0). The ABS also issues, on Tuesdays and Fridays, the *Release Advice* (1105.0) which lists publications to be released in the next few days. The *Catalogue* and *Release Advice* are available from any ABS office.

UNPUBLISHED STATISTICS

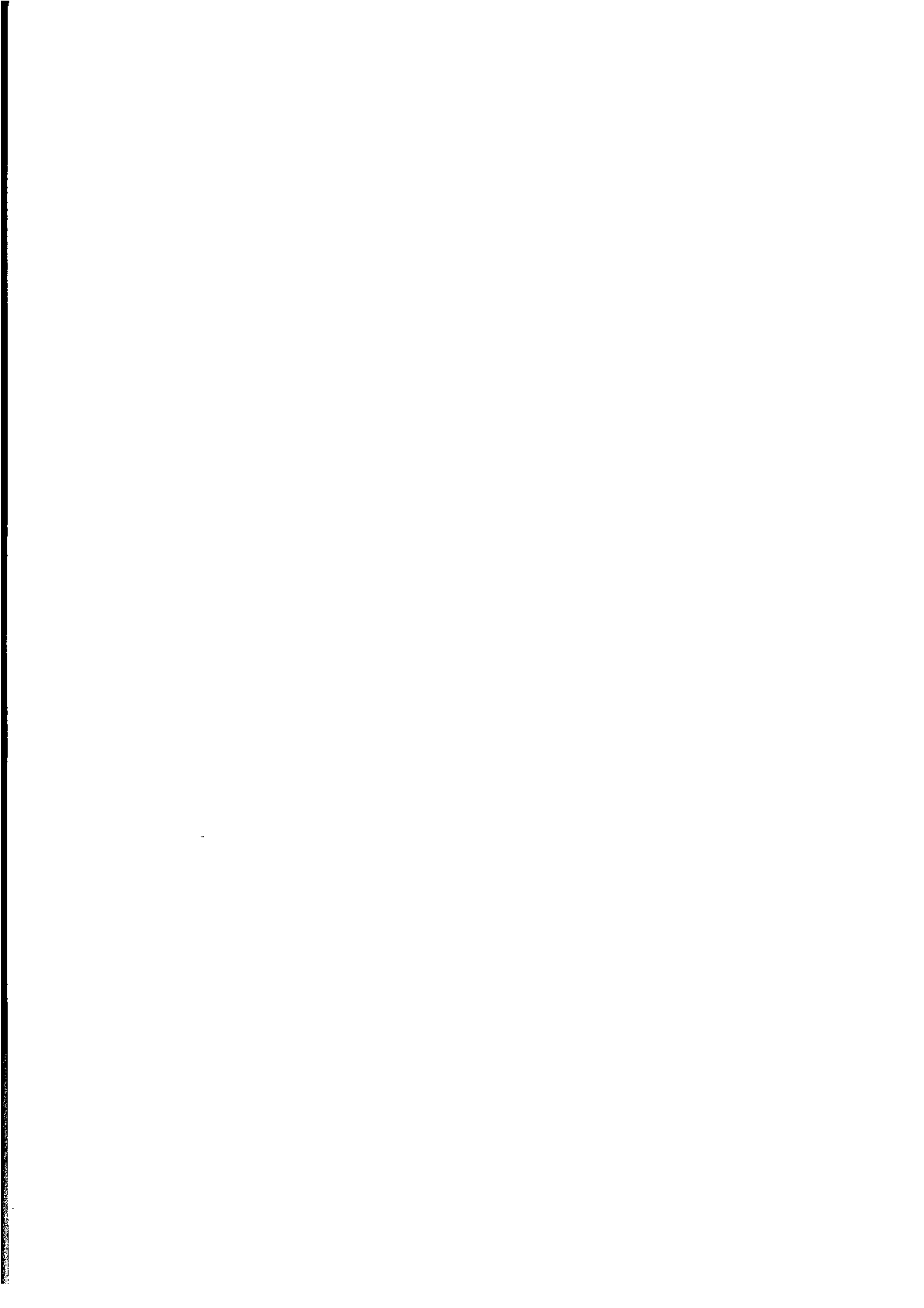
7 As well as the statistics included in this and related publications, the ABS may have other relevant unpublished data available. Inquiries should be made to Information Inquiries on (03) 6222 5800 or to any ABS office.

EFFECTS OF ROUNDING

8 Some figures have been rounded and discrepancies may occur between totals and sums of the component items.

SYMBOLS AND OTHER USAGES

n.a.	not available
n.y.a.	not yet available
..	not applicable
—	nil or rounded to zero
p	preliminary—figure or series subject to revision
r	figure or series revised since previous issue



For more information . . .

The ABS publishes a wide range of statistics and other information on Australia's economic and social conditions. Details of what is available in various publications and other products can be found in the ABS Catalogue of Publications and Products available from all ABS Offices.

ABS Products and Services

Many standard products are available from ABS bookshops located in each State and Territory. In addition to these products, information tailored to the needs of clients can be obtained on a wide range of media by contacting your nearest ABS Office. The ABS also provides a Subscription Service for standard products and some tailored information services.

National Dial-a-Statistic Line

0055 86 400

Steadycom P/L: premium rate 25c/21.4 secs.

This number gives 24-hour access, 365 days a year, for a range of important economic statistics including the CPI.

Internet

<http://www.statistics.gov.au>

A wide range of ABS information is available via the Internet, with basic statistics available for each State, Territory and Australia. We also have Key National Indicators, ABS product release details and other information of general interest.

Sales and Inquiries

Keylink STAT.INFO/ABS
X.400 (C:Australia,PUB:Telememo,O:ABS,FN:STAT,SN:INFO)
Internet stat.info@abs.telememo.au

National Mail Order Service (06) 252 5249
Subscription Service 1800 02 0608

	Information Inquiries	Bookshop Sales
SYDNEY	(02) 9268 4611	(02) 9268 4620
MELBOURNE	(03) 9615 7755	(03) 9615 7755
BRISBANE	(07) 3222 6351	(07) 3222 6350
PERTH	(09) 360 5140	(09) 360 5307
ADELAIDE	(08) 8237 7100	(08) 8237 7582
CANBERRA	(06) 252 6627	(06) 207 0326
HOBART	(03) 6222 5800	(03) 6222 5800
DARWIN	(08) 8943 2111	(08) 8943 2111



Client Services, ABS, PO Box 10, Belconnen ACT 2616

Produced by the Australian Government Publishing Service
© Commonwealth of Australia 1997

Recommended retail price: \$18.00



2130360004979

ISSN 1034-1803